



**PORTREE HIGH SCHOOL**  
***Àrd-sgoil Phort Rìgh***



# *Fàilte*

*Information Booklet for S1 Pupils*

*2023 - 2024*

*Striving for Excellence*

**READY, RESPONSIBLE, RESPECTFUL, RESILIENT**

## Page Contents

3	Welcome from the Head Teacher.
4	Plan of the School.
6	The School Day and Timetable.
7	S1 Subjects, Tutor Support and Names of Support Staff.
8	Frequently Asked Questions by P7 Pupils.
10	Will I Get a Chromebook?
11	Aim Skye High Rewards System.
11	What Happens During the Induction Day.
12	Term and Holiday Dates.
13	Your Questions.





Viewfield Road

Portree

Isle of Skye

IV51 9ET

Phone/Fon - 01478 614810

Portree High School  
Àrd-Sgoil Phort Rìgh

E-mail: [portree.high@highland.gov.uk](mailto:portree.high@highland.gov.uk)  
<http://www.portreehigh.highland.sch.uk>

---

Welcome to Portree High School

This booklet is designed to give you and your child as much information about Portree High School as possible whether your child is currently in Primary 7 or is enrolling from another school.

We believe in partnerships between pupils, parents, staff, with our associated schools and with the local community; by building on these partnerships we strive to offer your child the best learning and teaching possible in order to help them exceed their expectations. We have a great sense of pride in our school and we work hard to maintain a very positive ethos.

Communication therefore is very important to us. We issue regular newsletters, hold open consultation afternoons and have an active Parent Council. In order to keep parents informed about forthcoming events, we send out text messages on a regular basis. We also have a website and a Facebook page.

We are happy to get back to a more normal transition and are delighted that we are able to welcome students for their three induction days on the 21st-23<sup>rd</sup> June, in addition to a STEM day in May. We are hoping to resume our P7 Parents' welcome evening on Thursday 22nd June. I will send further details through when this is confirmed.

We want you to feel part of this team and look forward to having a very long and happy relationship with you and your child here in Portree High School.

If you have any questions then please do not hesitate to get in touch with me.

Leis gach deagh dhùrachd  
Best wishes,

Tony Breen  
Head Teacher

---

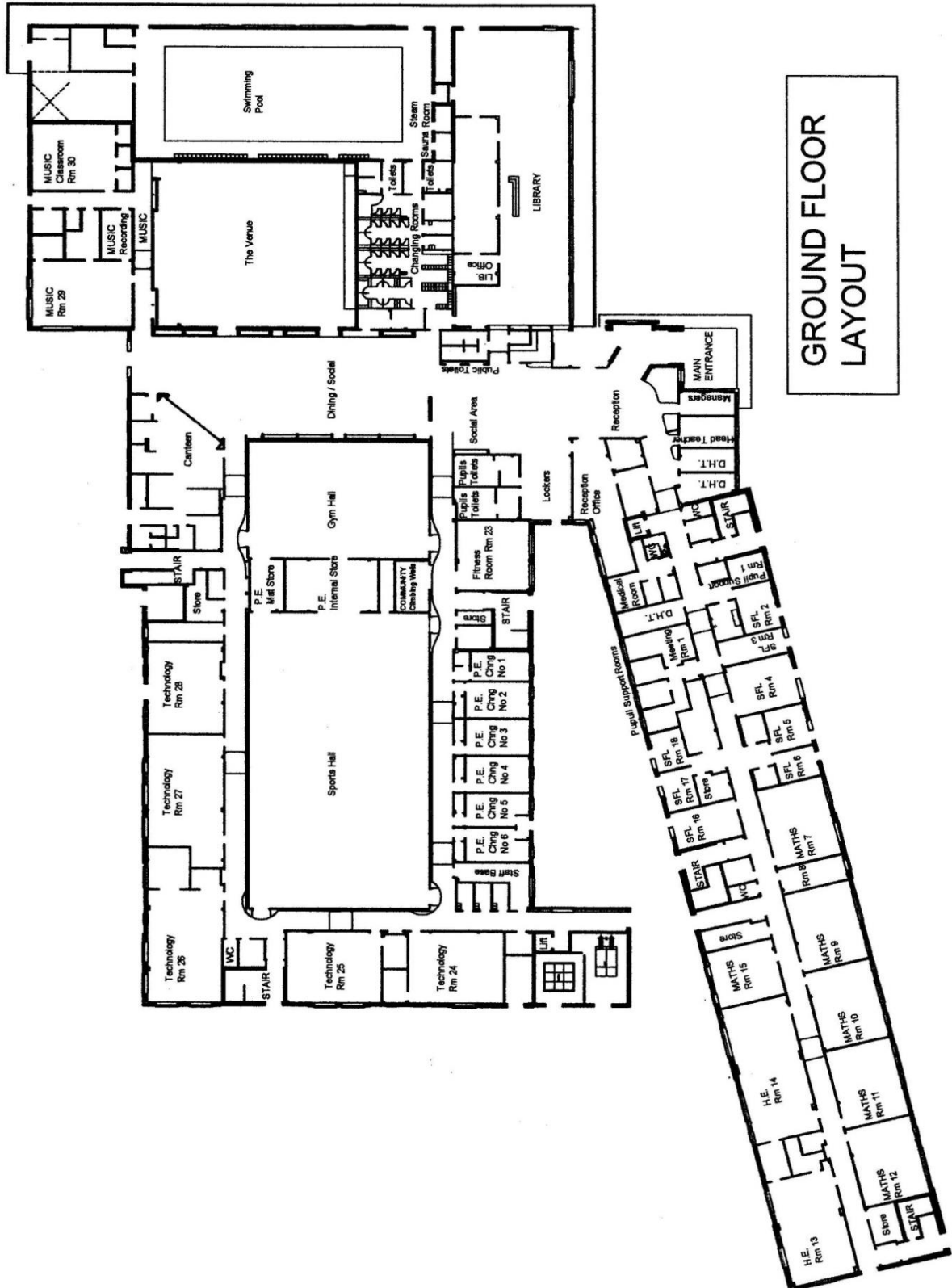
Mr A Breen  
Head Teacher/Ceannard

*Striving for Excellence*

READY, RESPONSIBLE, RESPECTFUL, RESILIENT

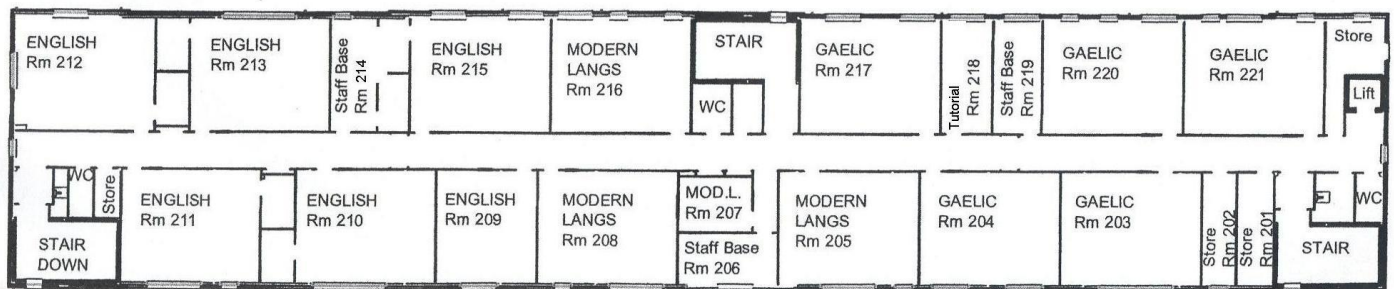
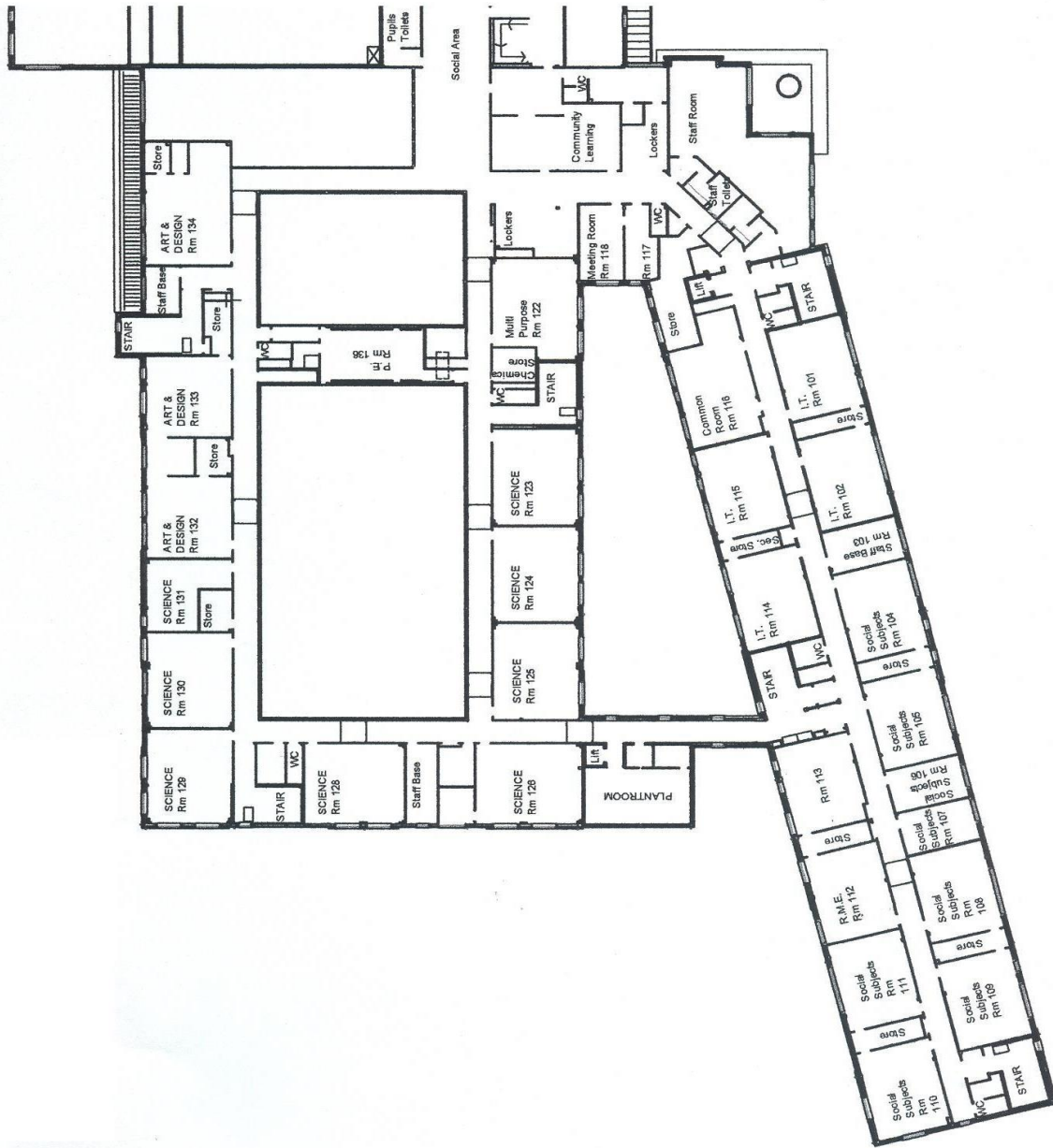


# Àrd sgoil Phort Rìgh: Portree High School



GROUND FLOOR LAYOUT

# First Floor



# Second Floor

# Fàilte / Welcome

This booklet has been written to answer some of the questions most commonly asked by new First Year pupils.

**How will I know where to go?**

## Daily Timetable

**Monday to Thursday**

**Friday**

With a Grab-n-Go Lunch and enhanced hot options at break

Period	Mon, Tues, Wed, Thurs	Time (min)		Period	Friday	Time (min)
1	8.50-9.40	50		1	8.50-9.40	50
2	9.40-10.30	50		2	9.40-10.30	50
<b>Interval 10.30-10.45</b>				<b>Interval 10.30-10.45</b>		
3	10.45-11.35	50		3	10.45-11.35	50
4	11.35-12.25	50		4	11.35-12.25	50
5	12.25-13.15	50		5	12.25--13.15	50
<b>Lunch 13.15-2.00</b>						
6	14.00-14.50	50				
7	14.50-15.40	50				

A warning bell will ring three minutes before the start of the school in the morning and afternoon. You should go to class when it rings.

You will be given a timetable which shows the subject you go to each period, the room number and your teacher's name. Your timetable contains important information so keep it somewhere safe during the induction day in June.

When you receive your timetable in August, make sure that you make a copy of it in the inside cover of the planner which you will be given.

## What subjects will I be doing in first year?

This is an example of all the different subjects which will be included in your timetable.

Subject	Number of Periods
English (EN)	4
Mathematics (MA)	5
Science (SC)	3
French (FR)	3
Gaelic/Gàidhlig (GN)	3
Social Subjects (History, Geography, Modern Studies)	3
Physical Education (PE)	2
Technology (TS)	2
Music (MU))	2
Art and Design (AD)	1
Religious Education (RME)	1
Home Economics	1
Digital Skills	1
Personal and Social Education (PSE)	1
Tutor Support	1



## Which teachers will I have?

You will have a different teacher for each subject, so you will get to know some of them more quickly than others, depending on how many periods per week you have their subject. As well as your subject teachers, you will have a Support Teacher whose job it is to help you. If you have a brother or sister in the high school, you will probably have the same Support Teacher as them.

## Tutor Time

Each week you will spend one lesson with your Tutor Time Teacher. During this lesson you will focus on learning skills and on wider achievement. Your tutor will help you review your progress and support you to do well in school. You will also keep up-to-date with important events and activities in school so that you can get involved. Success Assemblies and House Group activities also take place during Tutor Time.

## Principal Teachers of Pupil Support

Glamaig	Miss K MacPhee
Marsco	Mr N Burrows
Tianavaig	Mrs D Macleod
Support for Learning	Mr M Fox

*These are some of the questions which P7 pupils have asked previously.*

### **Will I be in the same class as my friends?**

*Unless you come from a big school like Portree Primary or Bun Sgoil Gaidhlig Portrigh, there's no guarantee you'll be with some of your friends but don't worry, you'll meet them at interval and lunchtime.*

### **What are school Houses?**

*The school is divided into three House Groups: **G**lamaig, **M**arsco and **T**ianavaig. You are usually put into the same House as your older brother or sister. The different Houses take part in competitions sometimes for charity and sometimes for fun.*

### **How do I pay for food?**

*When you come to the school you will receive an NEC Young Scot Card. You then use this card to buy food at interval or lunchtime from the canteen. Money is credited to your card by putting cash into the machine in the social area or online at home. You will be given a temporary PIN number to use until your card arrives.*

### **Are there any activities I can take part in?**

*There are a wide range of different activities to do at lunchtime or after school. You will find out what's on offer when you come to the high school. Activities include running, football and dance. There are late bus passes available for use on some bus routes.*

**Can I go out of the school at lunchtime?** *Pupils in S1 should stay in school grounds. The canteen has a wide variety of food and you can eat in or take away.*

### **Will the older pupils bully me?**

*If you are bullied, then you **MUST** tell someone. You can report it to your Buddy, Support Teacher or any other teacher.*

### **What about the behaviour on school buses?**

*There are prefects on most buses and if there is anyone misbehaving, the prefects will report them to one of the Depute Head Teachers. On most buses there are seating plans and the prefects make sure the right people are sitting in their places. Usually S1 pupils sit near the front of the bus. All pupils are expected to remain in their seat and wear their seatbelt during the bus journey.*







### **Who or what are Buddies?**

*Buddies are pupils who will help you settle into secondary school. They will visit your class on a regular basis to answer any questions you have and will be around during interval and lunchtime if you want to chat about anything you may be concerned about or confused over. You will meet your Buddies during the Induction Day.*

### **What should I wear to school?**

*The school is particularly keen that all pupils wear our school dress code and we welcome the support of parents in meeting this aim. School dress code is as follows:*

- *Black V-neck jumper, cardigan or school hoodie to be worn by pupils in S1 to S5, maroon blazer for S6 prefects*
- *White school shirt/blouse and school tie*
- *Smart black trousers/skirt (no denim or tracksuit bottoms and no writing on them)*
- *Solid black coloured footwear*

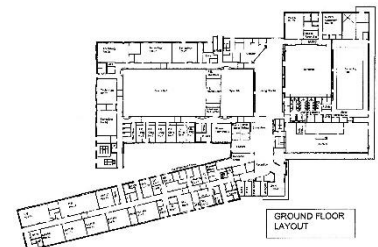
*Outer jackets worn for travelling to/from school should not be worn in classes*

### **What do I need to bring to school with me in August?**

*For some subjects you will be given jotters or books. Books should be covered, labelled with your name and carried to and from school in a strong bag. It is very important that you are well organised so that you take the right jotters and books to school on the right days. You will have to provide your own pencils, pens, rubber, ruler etc., so a pencil case is a good idea. On some days, you will also have to bring your PE kit, which consists of shorts, T shirt and trainers. These can be kept in your locker. Tracksuits can be worn in the winter for outdoor work. **Remember all the items should be labelled with your name. Remember to bring money for school lunch or bring your own packed lunch.***

### **What should I do if I get lost?**

***DON'T WORRY.** Even though the layout of the school looks complicated, you will soon get used to finding your way around and you will have a plan to help. Usually there will be other people in your class who are going to the same room as you during period changes, so you are unlikely to be lost on your own. If you know from your timetable which room you are supposed to be going to, but can't find it, ask one of the older pupils who will also be moving between classes at the same time as you.*



### **What should I do if I am absent from school?**

*Your parent or carer should phone or e-mail the school [PupilHigh.Absence@highland.gov.uk](mailto:PupilHigh.Absence@highland.gov.uk) to let them know you are going to be absent. The school has an automatic voicemail system that lets your parents know you are absent from school but they won't receive one if we know you will be off. When you return to school you will have to bring a note in. If you are off for more than a week, providing you aren't too ill, your parents should contact your Pupil Support Teacher who will arrange for homework to be sent home.*

### **What should I do if I feel ill during school time?**

*If you feel unwell in class, tell your teacher who will send you to Reception. If you feel unwell during the interval or lunchtime, go straight to Reception yourself.*

**DO NOT GO HOME OR CONTACT YOUR PARENTS TO PICK YOU UP.**

### **What should I do if I miss the bus home?**

*The buses don't leave until 3.50pm, so you have ten minutes after the end of the last period of the day to find your way to your bus. If something goes wrong and your bus goes without you, go to the main reception desk and let the office staff know. Arrangements will be made to get you home so stay calm and wait.*

### **Will the class work be hard?**

*Most pupils are good at some subjects and not so good at others. The teachers in the high school are used to teaching classes where there is a range of abilities. In some of your classes there will be your class teacher and a Pupil Support Assistant. Your teachers will try to make sure that you are given work that is just right for you – not too hard, but not too easy. Just do your best and work hard.*

### **Will I have a locker?**

*YES – You will be allocated a locker on the first week of term. A £5 deposit is required for your locker key. At the end of the session your £5 deposit will be returned when you hand your locker key back.*

### **Will I get homework?**

*Yes. Teachers will set your homework and add it to your Google Classroom.*

### **School Behaviour Policy**

*You will be given further information during your Induction Day.*

### **Will I get a Chromebook?**

*You will be issued with a Chromebook in August. **YOU MUST ENSURE** that you have a case to carry your Chromebook between school and home.*

## **Aim Skye High - Rewards System**

*Portree High's Rewards and Praise System recognises and rewards pupils on a termly basis.*

*Pupils who consistently are well-behaved, put in a really good effort or get involved in both school and community life, are recognised by having their name logged by their teacher.*

### **What are the rewards?**

*At the end of each term, **three** pupils in each year group will receive a reward in the form of a voucher from Amazon. The pupils with the most points in their year group will receive either a Gold Reward worth £20, a Silver Reward worth £15 or a Bronze Reward worth £10.*



Hopefully, we have answered the most common questions.

When you start in August you will be given more information about the school. You will also receive a school planner which contains a lot of useful information, including a plan of the layout of the school.



**We are all looking forward to meeting you and we hope you are looking forward to attending Portree High School in August.**

## SCHOOL HOLIDAYS - PLEASE KEEP THESE DATES TO HAND

The school office receives numerous enquiries about school holidays. The holiday dates are regularly placed in our newsletter Skyelines and can also be viewed on the school website: <http://www.portreehigh.highland.sch.uk>

The dates can also be accessed on the Highland Council website:  
<http://www.highland.gov.uk/learninghere/schools/schooltermdates/>

### HOLIDAY DATES - 2022/2023

Open	Close
Monday 14th August 2023 (Staff Only)	
Tuesday 15th August 2023 (Pupils)	Friday 6th October 2023
Monday 23rd October 2023	Friday 22nd December 2023
Monday 8th January 2024	Thursday 28th March 2024
Monday 15th April 2024	Thursday 27th June 2024

Note:

1. Two Days Casual Holiday: Monday 19th and Tuesday 20th February 2024.
2. Additional Holidays: May Day - Monday (6th May 2024).
3. In-Service Days: Monday 15th August, Monday 11th and Tuesday 12th September 2023, Wednesday 21st February 2024 and Thursday 2nd May 2024.

<http://www.highland.gov.uk/learninghere/schools/schooltermdates/>

PLEASE LOOK AT OUR WEBSITE for any further updates and information.

<http://www.portreehigh.highland.sch.uk>



**Please also "like" PORTREE HIGH SCHOOL ON FACEBOOK, TO GET NOTIFICATIONS OF ANY ALTERATIONS, etc.**

[www.facebook.com/portreehighschool/](http://www.facebook.com/portreehighschool/)